

Shenzhen Jinshunlaite Motor.,Ltd.

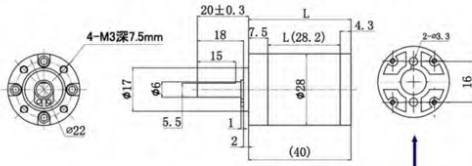
web: www.aslongdcmotor.com/www.aslongmotor.com

Email: sales@aslongmotor.com

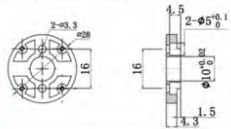
ASLONG



28mm Planetary gear box (unit:mm)



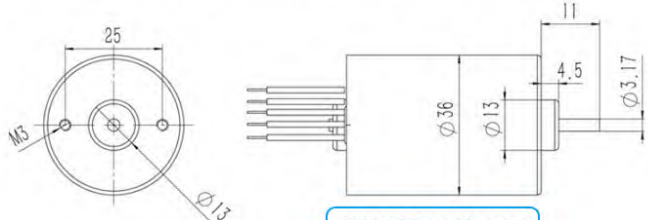
Planetary reducer baseplate size



Mddel:28mm Planetary

28mm Planetary gearbox parameter						
Reducer	Length (L/mm)	Ratio (i:1)				
		No.1 Class	22.9	4:1	5:1	
No.2 Class	28.7	16:1	20:1	25:1		
No.3 Class	34.4	64:1	80:1	100:1	125:1	
No.4 Class	40.0	256:1	320:1	400:1	500:1	625:1

Planetary gearbox installation requirements



Mddel:36mm Planetary

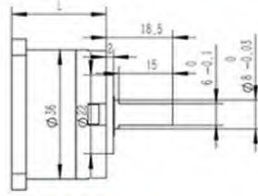
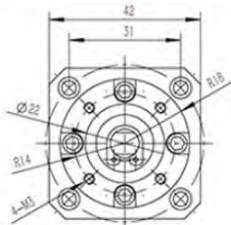
36#Planetary gearbox parameters				
Gearbox stages	Length (L/mm)	Reduction ratio (i)		
First deceleration	26.60	3.7:1	5.18:1	
Two-stage deceleration	32.60	14:1	29:1	27:1
Three-stage deceleration	38.70	50:1	71:1	100:1 139:1
Four-stage deceleration	44.80	189:1	263:1	369:1 516:1 721:1

Shenzhen Jinshunlaite Motor.,Ltd.

web: www.aslongdcmotor.com/www.aslongmotor.com

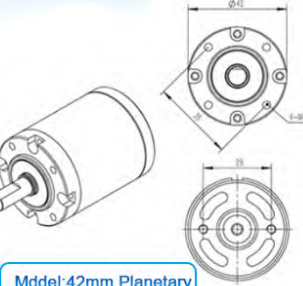
Email: sales@aslongmotor.com

ASLONG



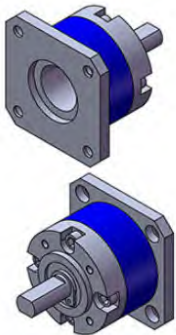
Mddel:42step gearbox

Number of stages	L size	Reduction ratio
level 1	26.5	3.7
		13.7
level 2	32.5	19.2
		51
level 3	38.5	71
		99.5
level 4	44.5	188.6
		263.7
		368.7
		515.6



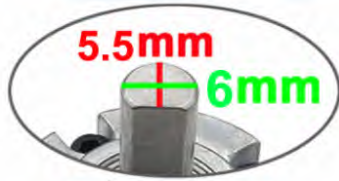
Mddel:42mm Planetary

grade	Length (mm)	Reduction ratio	Number of teeth of inner ring gear	Motor tooth inner hole 5.0
Level 1	31.5	3.7	46	17
		13.7	46	17
Level 2	42	19.2	46	17
		51	46	17
Level 3	45	71	46	17
		99.5	46	17
Level 4	63.5	188.6	46	17
		263.7	46	17
		368.7	46	17
		515.6	46	17





Shenzhen Jinshunlaite Motor.,Ltd.
 web: www.aslongdcmotor.com/www.aslongmotor.com
 Email: sales@aslongmotor.com

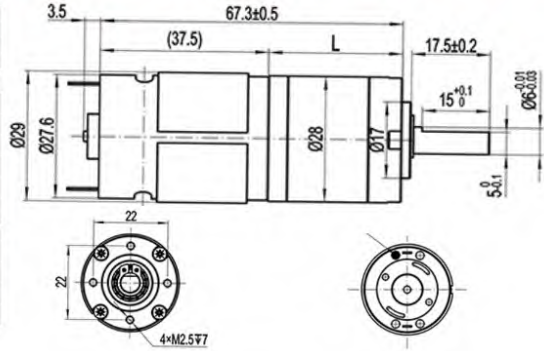


Mddel:CM28-385

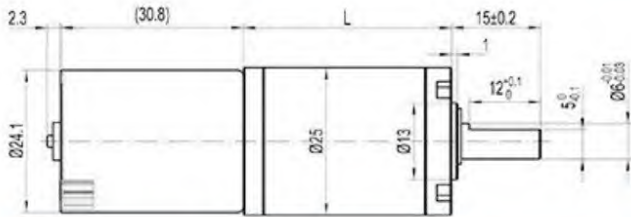


Model	Voltage		No load				Rated load				Stall	
	V	r/min	Speed	Current	Speed	Current	Torque	Power	Current	Torque	A	g.cm
XM-385-2400-11	24	8000	0.1	5850	0.5	180	11	1.78				240

CM28-385-2480planetary gear motor parameters														
Reduction ratio	3.353	4.636	11.243	15.544	21.492	37.696	52.12	72.054	93.639	126.396	174.76	241.632	334.09	461.927
No load r/min	2386	1726	712	515	372	212	153	111	89	63	46	33	24	17
No load A	0.1	0.1	0.1	0.1	0.1	0.1	0.1	0.1	0.1	0.1	0.1	0.1	0.1	0.1
Rated KG.CM	0.37	0.43	0.74	1.79	2	2.26	3.39	4.06	4.73	5	15.63	17.84	26.3	28.4
Load r/min	1324	1243	562	322	260	174	112	90	71	53	35	27.3	19	15
Load A	0.764	0.623	0.462	0.615	0.55	0.407	0.574	0.44	0.359	0.345	0.634	0.515	0.611	0.42
Power W	5.13	5.59	4.35	6.03	5.44	4.1	3.94	3.82	3.51	2.78	5.71	5.1	5.18	4.46
Stall KG.CM	0.86	1.35	3	4.32	6.5	11	12.2	17	22.8	29.6	37.2	54.2	70	90
Stall A	1.464	1.72	1.54	1.525	1.518	1.61	1.86	1.526	1.541	1.525	1.488	1.525	1.494	1.563
Size mm	23.2		29.8		36.4						43			
Weight g	140		160		180						200			



Shenzhen Jinshunlaite Motor.,Ltd.
 web: www.aslongdcmotor.com/www.aslongmotor.com
 Email: sales@aslongmotor.com



Mddel:CM28-2430

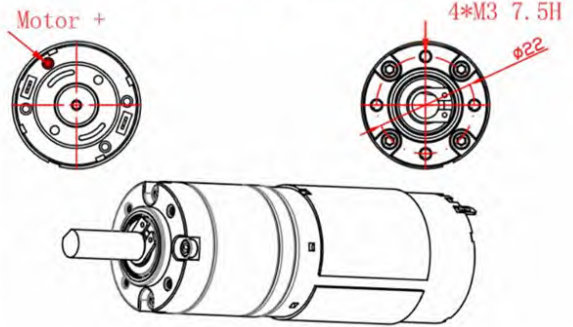
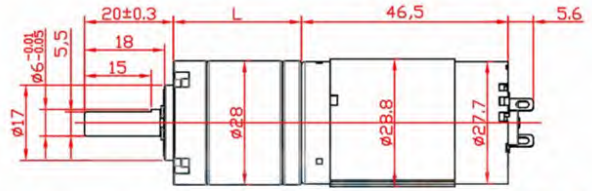


Model	Voltage	No load		Load				Stall	
	V	Speed r/min	Current A	Speed mr/min	Current A	Torque Kg.cm	Power W	Current A	Torque Kg.cm
25-2430-12V1411RPM	12	1411	0.36	888	0.85	0.43	4	1.9	1
25-2430-12V333RPM	12	333	0.18	227	0.76	1.26	3	1.9	3
25-2430-12V79RPM	12	79	0.18	55	0.8	5.5	3.2	1.8	12
25-2430-12V18RPM	12	18	0.16	14	0.83	21	3.1	2.1	46

Shenzhen Jinshunlaite Motor.,Ltd.
 web : www.aslongdcmotor.com/www.aslongmotor.com
 Email : sales@aslongmotor.com



Mdel:CM32-395B



Voltage		No load		At Load				Stall		Reducer		Weight
Working Range	Rated	Speed	Current	Torque	Speed	Torque	Current	Torque	Current	Ratio	Size	unit
	volt.v	rpm	mA	kg.cm	rpm	kg.cm	A	kg.cm	A	1:1000	mm	g
15-28V	24	1600	310	1200	946	0.8	8	4	3	5	22.9	150
15-28V	24	320	310	240	946	2.7	8	9.7	3	25	28.7	190
15-28V	24	80	310	60	946	8.9	8	30	3	100	34.4	220
15-28V	24	25	310	19	946	30	8	Blockin g	3	320	40	250
6-12V	12	1600	330	1200	980	1	8.5	5	3	5	22.9	150
6-15V	12	320	330	240	980	3	8.5	10.2	3	25	28.7	190
6-16V	12	80	330	60	980	9	8.5	32	3	100	34.4	220
6-17V	12	25	330	19	980	32	8.5	Blockin g	3	320	40	250

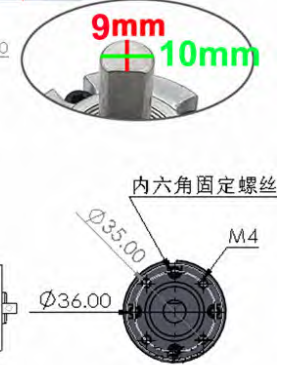
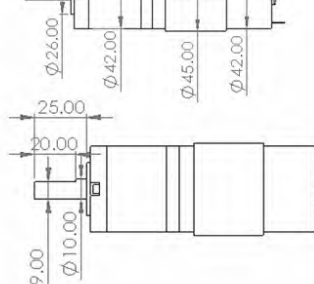
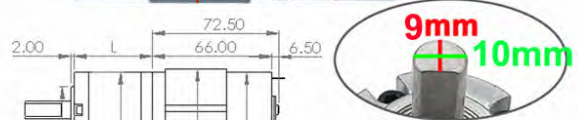
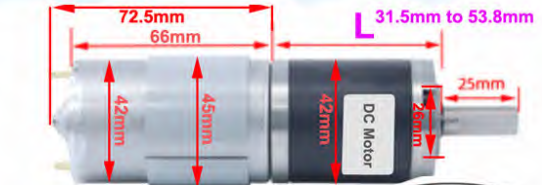
Shenzhen Jinshunlaite Motor.,Ltd.
 web : www.aslongdcmotor.com/www.aslongmotor.com
 Email : sales@aslongmotor.com



Mdel:CM42-775

Voltage		No load		Rated Load				Max Load	
Rated voltage	Ratio	Speed ±10%	Current	Speed ±10%	Current	Torque	Out Power	Torque	Current
v	1:X	rpm	mA	rpm	A	kgf.cm	W	kgf.cm	A
12v	5.2	960	0.5	720	2	3.5	24	10	10
	14	357		268		6.5		20	
	27	185		139		15		30	
	50	100		75		30		65	
	70	70		53		45		75	
	100	50		38		50		85	
139	35	26	60	100					

Voltage		No load		Rated Load				Max Load	
Rated voltage	Ratio	Speed ±10%	Current	Speed ±10%	Current	Torque	Out Power	Torque	Current
v	1:X	rpm	mA	rpm	A	kgf.cm	W	kgf.cm	A
24v	5.2	960	0.3	720	1.5	3.5	36	10	7.5
	14	357		268		6.5		20	
	27	185		139		15		30	
	50	100		75		30		65	
	70	70		53		45		75	
	100	50		38		50		85	
139	35	26.3	60	100					





Shenzhen Jinshunlaite Motor.,Ltd.

web: www.aslongdcmotor.com/www.aslongmotor.com

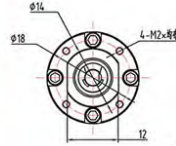
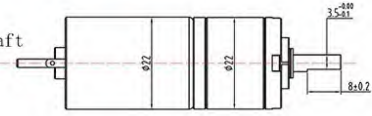
Email: sales@aslongmotor.com



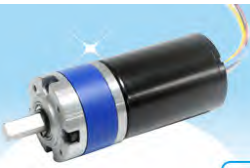
Mdel:PG22-2230

Working Range	Voltage		No load		Load Torque				Stall		Reducer Ratio	Size mm	Weight g
	Rated volt	V	Speed rpm	Current mA	Speed rpm	Current mA	Torque kg.cm	Output W	Torque kg.cm	Current A			
6-12V	12V	2571	90	2057	178	0.14	4.2	1	3.2	3.5	14	70	
6-12V	12V	1895	90	1516	178	0.2	4.2	1.3	3.2	4.75	17.5	76	
6-12V	12V	750	90	600	178	0.5	4.2	3.3	3.2	12	21	85	
6-12V	12V	563	90	450	178	0.7	4.2	4.4	3.2	16	24.5	92	
6-12V	12V	375	90	300	178	1	4.2	6.6	3.2	24	14	70	
6-12V	12V	184	90	147	178	2	4.2	8.5	3.2	49	17.5	76	
6-12V	12V	84	90	67	178	4.3	4.2	8.5	3.2	107	21	85	
6-12V	12V	63	90	50	178	6	4.2	18.5	3.2	144	24.5	92	
6-12V	12V	44	90	35	178	8.3	4.2	25	3.2	204	14	70	
6-12V	12V	30	90	24	178	12.5	4.2	32	3.2	304	17.5	76	
6-12V	12V	18	90	14	178	16	4.2	ban	3.2	510	21	85	
12-24V	24V	2571	60	2057	150	0.14	4	1	2.8	3.5	14	70	
12-24V	24V	1895	60	1516	150	0.2	4	1.3	2.8	4.75	17.5	76	
12-24V	24V	750	60	600	150	0.5	4	3.3	2.8	12	21	85	
12-24V	24V	563	60	450	150	0.7	4	4.4	2.8	16	24.5	92	
12-24V	24V	375	60	300	150	1	4	6.6	2.8	24	14	70	
12-24V	24V	184	60	147	150	2	4	8.5	2.8	49	17.5	76	
12-24V	24V	84	60	67	150	4.3	4	8.5	2.8	107	21	85	
12-24V	24V	63	60	50	150	6	4	18.5	2.8	144	24.5	92	
12-24V	24V	44	60	35	150	8.3	4	25	2.8	204	14	70	
12-24V	24V	30	60	24	150	12.5	4	ban	2.8	304	17.5	76	
12-24V	24V	18	60	14	150	16	4	ban	2.8	510	21	85	

Motor engine and shaft
Can be customized



PG22-2230 Planetary gear motor
12V 24V 9000RPM
Metal case
Rear-resistor
Factory price
can be customized



Shenzhen Jinshunlaite Motor.,Ltd.

web: www.aslongdcmotor.com/www.aslongmotor.com

Email: sales@aslongmotor.com



Mdel:PG36-3650

Rated voltage	Reduction ratio	No load			Rated			Stall		Gearbox length	Weight
		Speed R/MIN	Current MA	Torque Kg.cm	Speed R/MIN	Current MA	Torque Kg.cm	Current A			
12V	3.7	1600	230	0.7	1300	1300	3.2	4	26.6	666	
	5.18	1200	230	1	1000	1300	4.6	4			
	14	430	230	3	360	1300	10.7	4			
	27	230	230	5	195	1300	20.7	4			
	50	120	230	9	100	1300	38	4			
	71	85	230	13	75	1300	46	4			
	100	60	230	18	52	1300	65	4			
	139	45	230	20	40	1300	90	4			
	189	32	230	26	24	1300	110	4			
	263	23	230	36	17	1300	150	4			
	369	16	230	51	12	1300	4	4			
	516	12	230	71	9	1300	禁止堵转	4			
721	8	230	100	6	1300	4	4				
24V	3.7	1600	130	0.7	1300	670	5	4	26.6	666	
	5.18	1200	130	1	1000	670	7	4			
	14	430	130	3	360	670	17.5	4			
	27	220	130	5	195	670	34	4			
	50	120	130	9	100	670	63	4			
	71	85	130	13	75	670	90	4			
	100	60	130	18	52	670	126	4			
	139	45	130	20	40	670	175	4			
	189	32	130	26	24	670	4	4			
	263	23	130	36	17	670	4	4			
	369	16	130	51	12	670	禁止堵转	4			
	516	12	130	71	9	670	4	4			
721	8	130	100	6	670	4	4				

waring: Forbidden to connect wrong M +and M -, and Yellow wire to living

- Motor +
- Motor -
- 0-5v Pwm speed governing
- 6pcs PPR
- with motor -, motor ccw; white is off, motor cw

